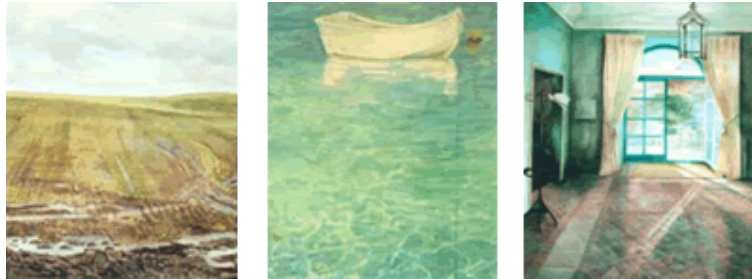


## Sue Lewis-Blake

### Paintings, Commissions, Tuition & Fine Art Consultancy



#### INFORMATION ABOUT THE LAUNCH OF A NEW SERIES OF EXHIBITIONS AND EVENTS

**Beginning in 2009 a series of exhibitions and events will take place at the Mill, Little Shrewley, Near Warwick.**

The aim of these events is to showcase high quality art work by contemporary artists, principally, but not exclusively, those based in Warwickshire. Many of the artists will already have exhibited nationally or internationally but this is an opportunity to highlight emerging talent too.

Each exhibition will be launched at an open evening from 6.00pm – 8.30pm on the first Friday of each month. After this, the work will be able to be viewed by appointment for up to three weeks.

Whilst many of the pieces on show will be for sale, the intention is that these events will be far from just commercial ventures.

It's hoped that these relaxed evening "socials" will become firmly fixed in the diaries of anyone interested in fine art: students, practitioners of all levels, collectors, connoisseurs and those curious to know more. The timing has been chosen so that it is possible to call in on the way home from work or on the way to another engagement as well as to stay and enjoy the whole evening.

"First Fridays" will provide a regular opportunity for artists to meet and discuss their ideas, so gaining mutual feedback on work in progress. The intention is to display a wide cross section of media and approaches, highlighting an inter-relationship rather than any barriers between "traditional" and "contemporary".

Collectors and the directors of commercial galleries will be invited to attend and further artistic opportunities may therefore emerge as a result of works being showcased at the Mill.

Artists will also be able to leave details of their own studios, events and contact details for visitors to collect.

Outstanding work is produced year after year in school art departments and there are few opportunities for this to be seen [and for the hard work staff and students to be recognised] beyond the schools themselves. From time to time A Level pieces by talented young students will be featured at the exhibitions alongside those of professionals.

Tailor made courses including private tuition will also be available at the Mill for all levels of ability.

For further information please contact:

**The Studio at the Mill, Little Shrewley, Warwickshire, CV35 7HN**

**07773 385820**

[www.lewis-blake.co.uk](http://www.lewis-blake.co.uk)

[sue@lewis-blake.co.uk](mailto:sue@lewis-blake.co.uk)